

PHARMACEUTICAL NEEDS ASSESSMENT, MARCH 2025 UPDATE

Relevant Board Member(s)	Kelly O'Neill – Director of Public Health
Organisation	London Borough of Hillingdon
Report author	Kim Overy – Business Analyst, LBH
Papers with report	None

1. HEADLINE INFORMATION

Summary	<p>From 1 April 2013, the statutory responsibility to publish and keep up to date a statement of the need for pharmaceutical services for the population in its area transferred to Health and Wellbeing Boards from Primary Care Trusts. This statement is known as the 'Pharmaceutical Needs Assessment' (PNA).</p> <p>The PNA assists in the commissioning of pharmaceutical services to meet local priorities. NHS England also use the PNA when making decisions on applications to open new pharmacies. A revised PNA should be published every 3 years. The next PNA must be published by 1st October 2025.</p> <p>This paper presents an update on progress to the Health and Wellbeing Board.</p>
Contribution to plans and strategies	The PNA analyses the provision of pharmacy services within Hillingdon. This is a statutory responsibility of the Health and Wellbeing Boars, and contributes to the Hillingdon Joint Health and Wellbeing Strategy (JHWBS).
Financial Cost	There are no direct financial costs arising from this report.
Ward(s) affected	All

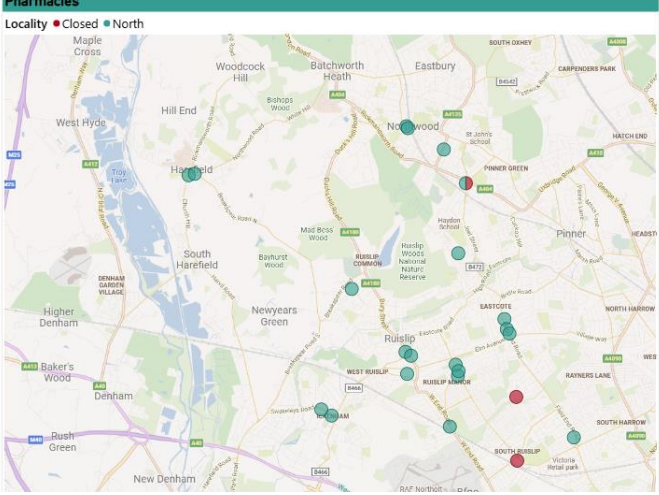
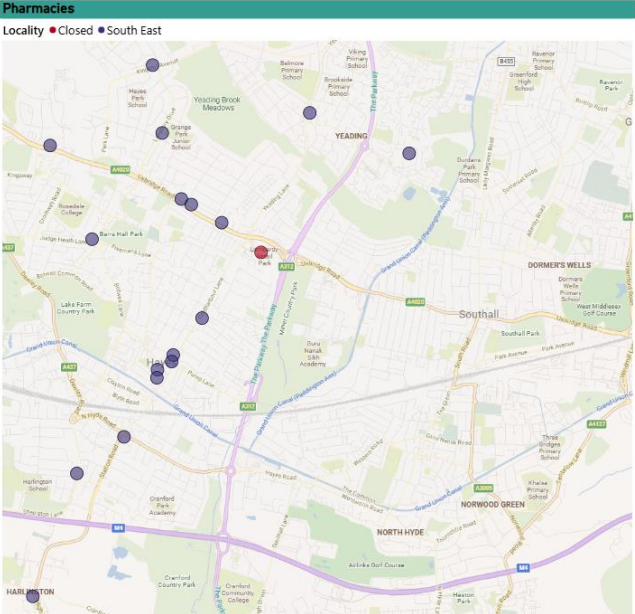
2. RECOMMENDATIONS

The Health and Wellbeing Board is asked to note that:

1. work on the 2025 PNA is on track for publication by 1 October 2025;
2. since the last PNA (published in 2022), five pharmacies have closed;
3. data analysis of Borough demographics, health and pharmacy/prescribing data is underway; and
4. all pharmacies within the Borough have been issued with a questionnaire.

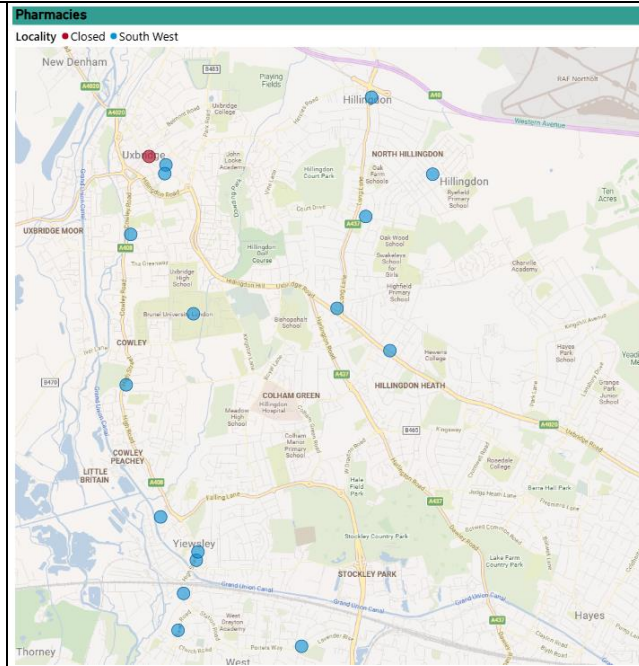
Information

It is noted that, since the last PNA published in 2022, five pharmacies have closed. These pharmacies have been either within town centres served by other pharmacies or are on good public transport routes (within Hillingdon or across the boundary into other boroughs). Analysis as part of the review process will determine any impacts of these closures, alongside the growing population:

Closed Pharmacy Locality	Map
<p>North / Ruislip & Northwood:</p> <p>Boots, Northwood Hills – this pharmacy was next door to Ross Pharmacy</p> <p>Lloyds, South Ruislip Sainsburys – this pharmacy is on a bus route to Ruislip Manor and Rayers Lane / Harrow town centre</p> <p>Boots, Whitby Road (South Ruislip/Eastcote boundary) – this pharmacy is near the bus route to Northwood, Northwood Hills, Eastcote, Northolt and Greenford</p>	
<p>South East / Hayes & Harlington</p> <p>Lloyds, Hayes Sainsburys – this pharmacy is close to eight pharmacies within Hayes Town and along the Uxbridge Road (walkable or on public transport links)</p>	

South West / Uxbridge & West Drayton

Boots, Uxbridge Town centre – this pharmacy is within walking distance to Boots within The Chimes shopping centre and Flora Fountain pharmacy



Data analysis of Borough demographics, health and pharmacy/prescribing data is underway and will include:

- Demographic analysis that provides an overview of the current population; general demographics at Borough and ward level, deprivation and economic activity and an overview of certain patient groups (i.e. CORE20, university students)
- Epidemiology analysis includes life expectancy, mortality and disease prevalence at PCN level
- Prescribing data analysis includes prescription flows between GPs and pharmacies, alongside maps showing travel times to pharmacies

All pharmacies within the Borough have been issued with a questionnaire, with 10 responses so far. The deadline for completion is the end of March (this timeframe may need to be extended to maximise response rates).

3. NEXT STEPS

1. To re-establish a steering group to ensure the project is on track and as the data is developed and analysed, to have objective oversight to challenge assumptions.
2. Create a questionnaire for residents to give views on their pharmacy choices.
3. Continue to engage with pharmacies to maximise questionnaire completion.

A statutory 60-day consultation will also need to be undertaken and hosted on the Council website, between July 2025 to September 2025.

A further update will be provided at the next Health and Wellbeing Board meeting in June 2025.